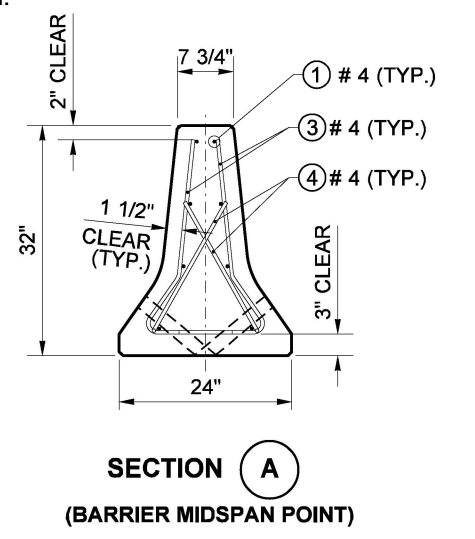
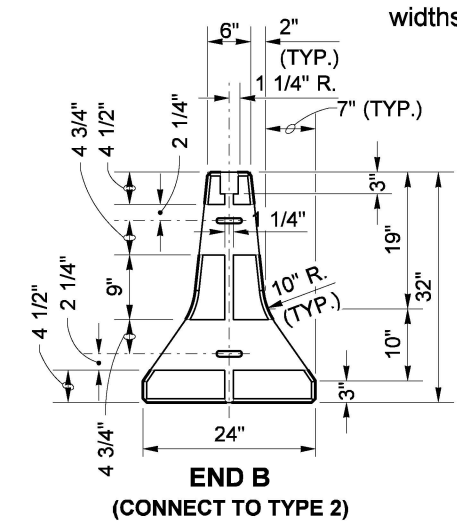
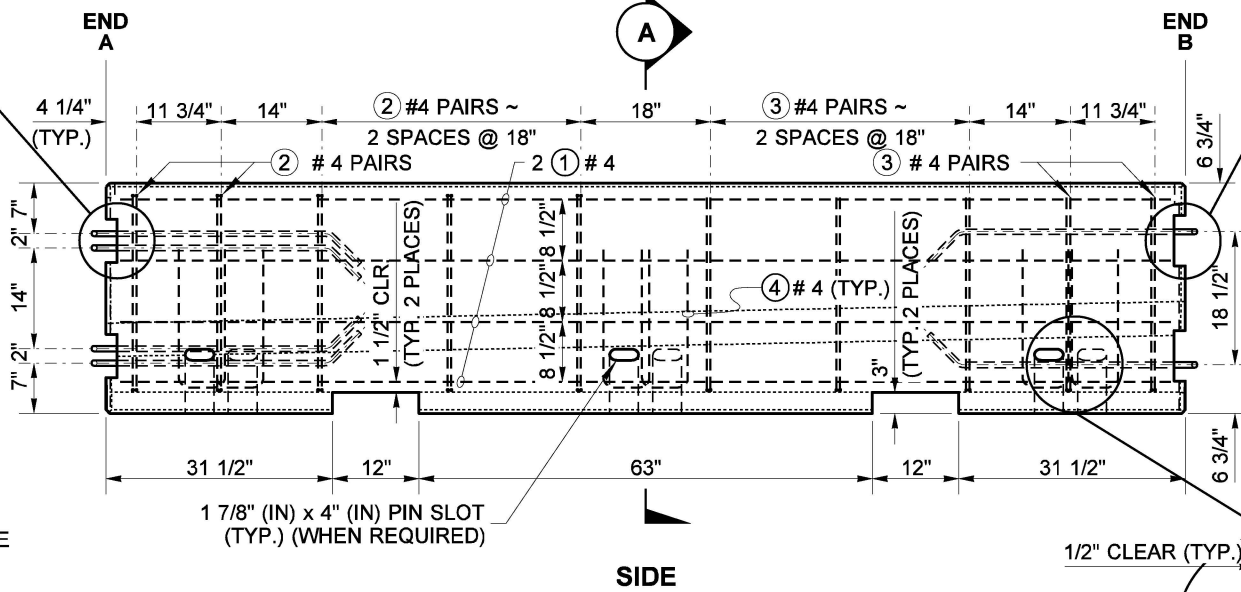
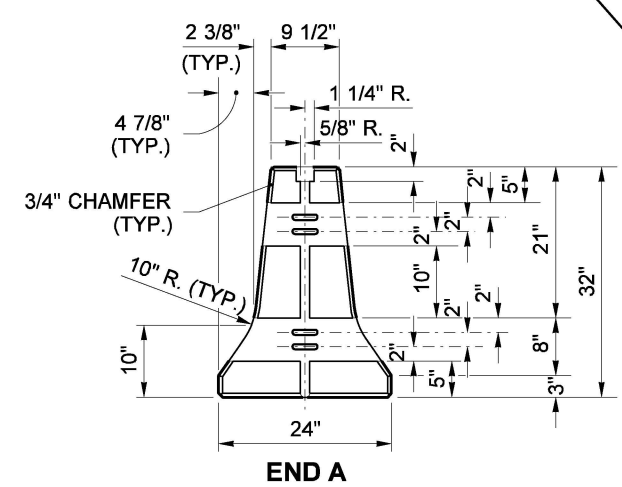
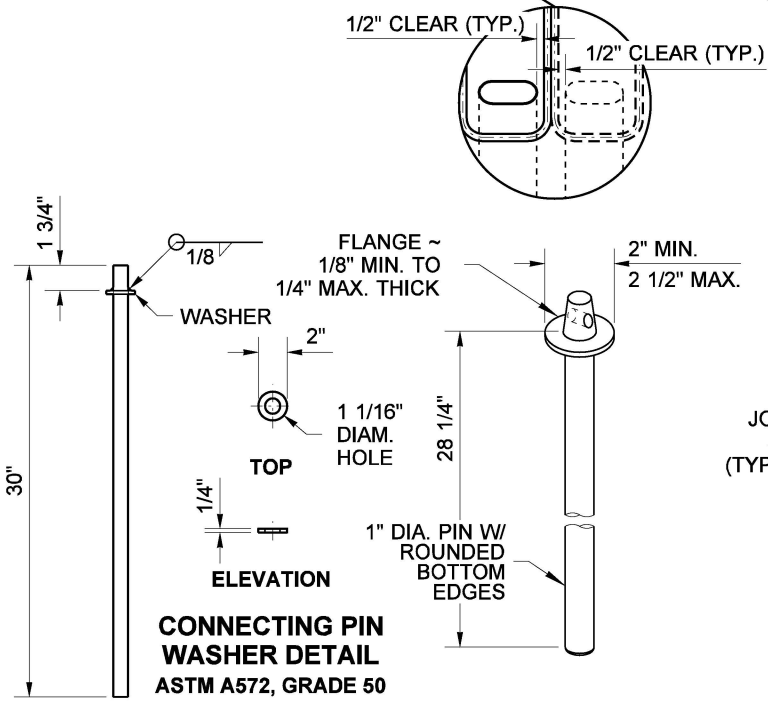
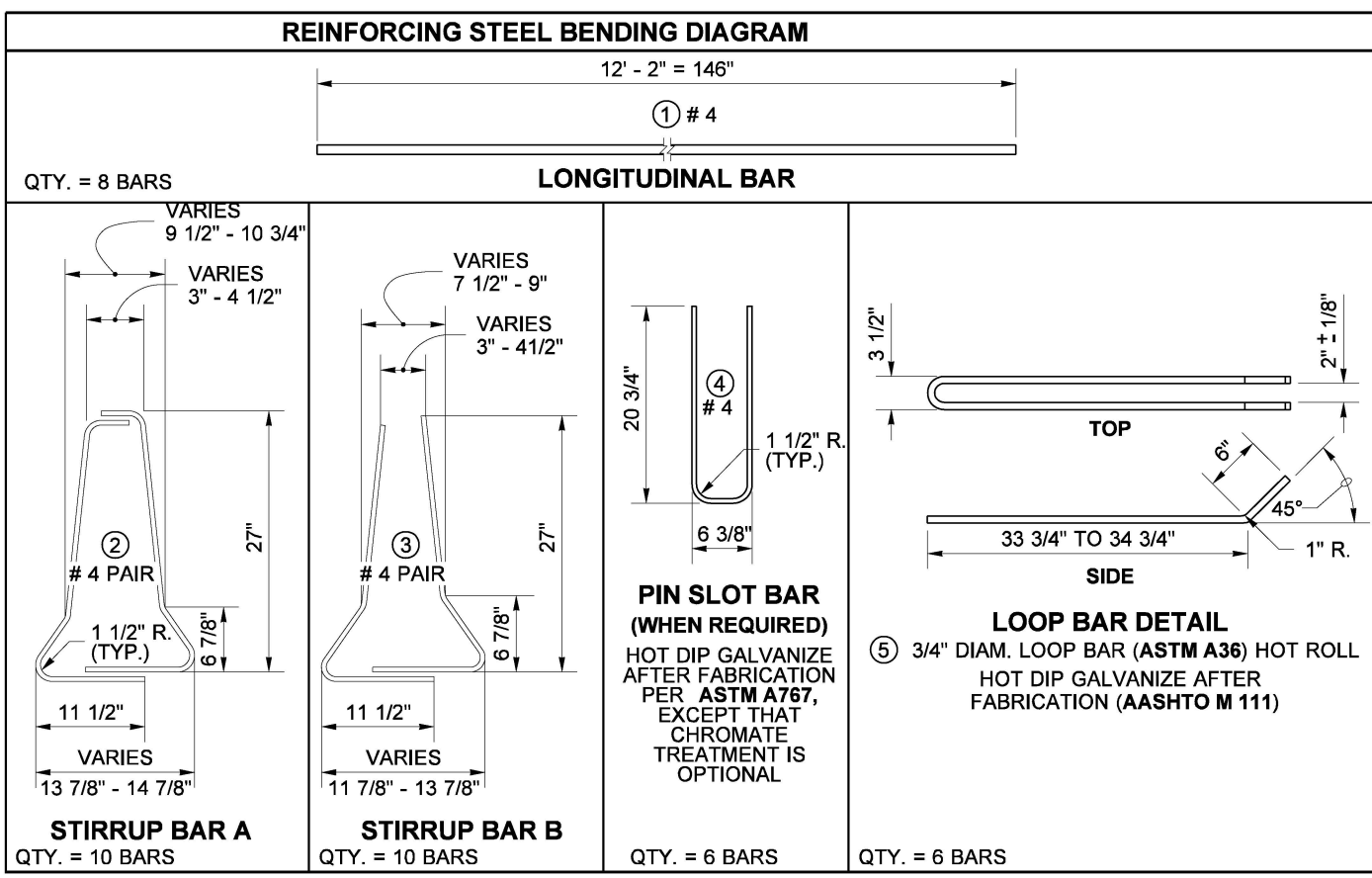


**NOTES**

1. Concrete for Type F transition to Type 2 barrier shall be Class 5000.
2. Remove slack between barrier segments after inserting the connecting pin.
3. See **Standard Plan C-60.10** and **C-60.70** for Barrier Anchoring Details (when being anchored).
4. Provide 2" minimum concrete cover over reinforcing steel, except for areas noted on plan.
5. Connecting Pin head designs vary among different manufacturers. Pin designs that are shaped differently than those shown in the detail are acceptable, if the bearing surface is within the minimum and maximum widths specified.



**NOTE: (CONNECT TO TYPE F)**  
 STEEL WELDED WIRE REINFORCEMENT DEFORMED FOR CONCRETE MAY BE SUBSTITUTED FOR REINFORCING STEEL IN ACCORDANCE WITH **STANDARD SPECIFICATION, SECTION 6-10.3**

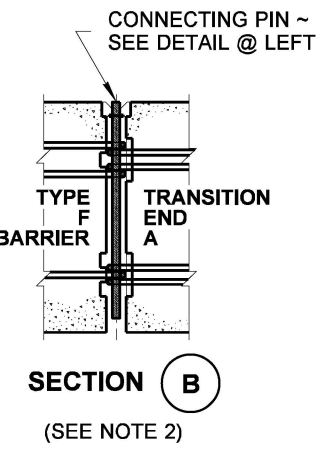
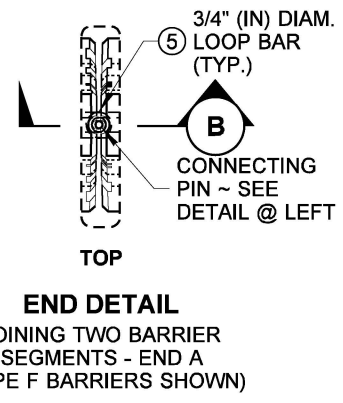


**CONNECTING PIN WASHER DETAIL**  
 ASTM A572, GRADE 50

WELDED WASHER PIN SEE NOTE 5

FORGED HEAD PIN (ALTERNATIVE)

**CONNECTING PIN ASSEMBLY DETAIL**  
 1" DIAMETER PER **ASTM A449**  
 HOT DIP GALVANIZE AFTER FABRICATION PER **ASTM F2329**



**TYPE F TRANSITION TO TYPE 2 BARRIER PLAN**  
**STANDARD PLAN C-60.30-01**  
 SHEET 1 OF 1 SHEET

APPROVED FOR PUBLICATION  
 Aug 17, 2021  
 STATE DESIGN ENGINEER  
 Washington State Department of Transportation