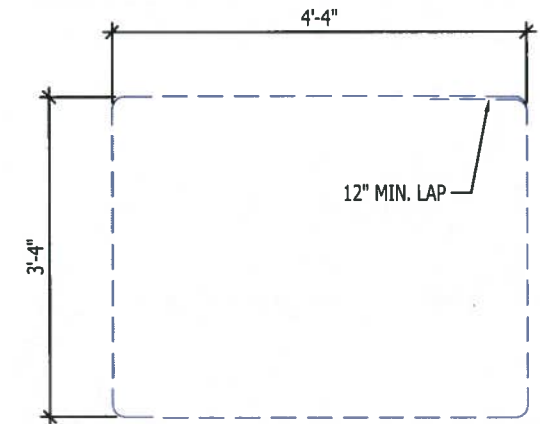
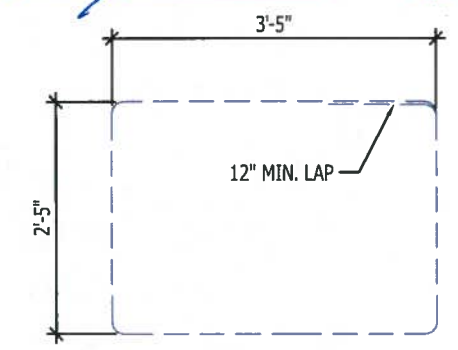


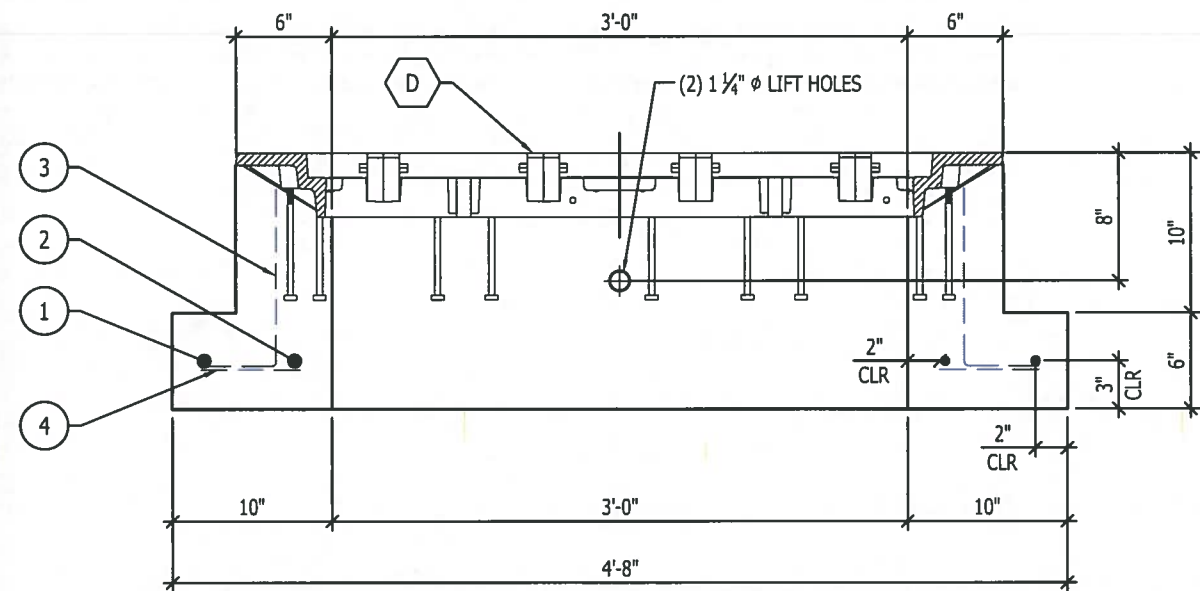
SECTION B-B
SCALE: 1" = 1'-0"



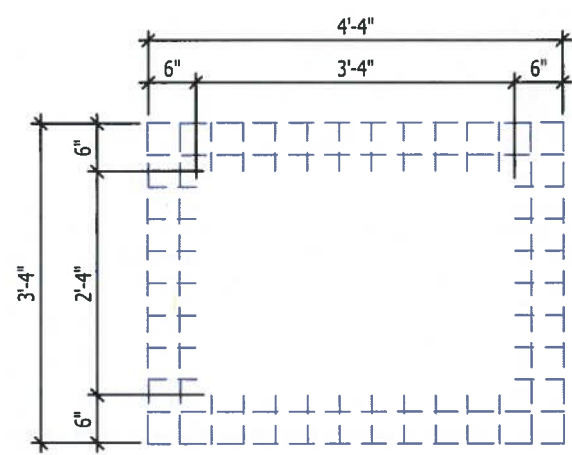
DETAIL ITEM #1
SCALE: 1/2" = 1'-0"



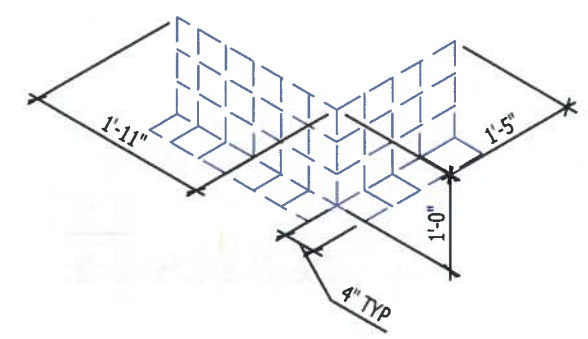
DETAIL ITEM #2
SCALE: 1/2" = 1'-0"



SECTION A-A
SCALE: 1" = 1'-0"



DETAIL ITEM #4
SCALE: 1/2" = 1'-0"



DETAIL ITEM #3
SCALE: 1/2" = 1'-0"

4 Total - 2 are mirrored

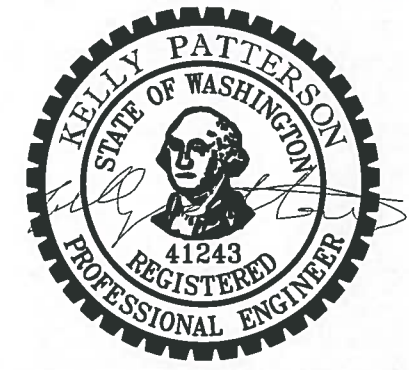
- NOTES:
1. CONCRETE $f_c=4,000$ PSI
 2. WWR: ASTM A1064 $f_y = 65,000$ PSI
 3. REINFORCING ASTM A706 $f_y = 60,000$ PSI
 4. BOLT: ASTM A307
 5. PENTAHEAD BOLT & WASHER SS304

BILL OF MATERIALS		
ITEM	QUANTITY	DESCRIPTION
A	0.39 YDS	H2 PRECAST MDX #6
B	30 LBS.	REBAR - #5
C	18 SQ.FT	WWR- 4X4- W5
D	1 EA	HATCH-ej PRODUCT # 00826821B02
E	24 EA	3/8"-16X8" ASTM A-307 BOLTS

REINFORCING CUT LIST			
ITEM	QTY.	MATERIAL	DESCRIPTION
1	1	REBAR - #5	HOOP (SEE DETAIL)
2	1	REBAR - #5	HOOP (SEE DETAIL)
3	4	MESH	WWR 4 X 4- W5/W5
4	1	MESH	WWR 4 X 4- W5/W5

PRODUCT WEIGHT	
PRODUCT	WEIGHT
WSDOT T6 J-BOX	1,580 LBS. W/O HATCH ASSEMBLY

APPROVED AS NOTED
Washington State Department of Transportation
HQ Traffic Operations Office
BY: *[Signature]* DATE: 8/16/2019



THIS DRAWING HAS BEEN PREPARED FOR YOUR REVIEW AND APPROVAL

- APPROVED AS SUBMITTED
- APPROVED AS CORRECTED
- RESUBMIT

PLEASE CHECK THE APPROPRIATE BOX AND RETURN ONE SIGNED COPY SO THAT WE MAY PROCEED WITH PRODUCTION.

SIGNED _____
TITLE _____ DATE _____

THIS DRAWING IS INTENDED FOR THE USE OF THE INDIVIDUAL TO WHICH IT ADDRESSES AND CONTAINS INFORMATION THAT IS PRIVILEGED, CONFIDENTIAL AND EXEMPT FROM DISCLOSURE. IF YOU ARE NOT THE INTENDED RECIPIENT, PLEASE DO NOT DISSEMINATE, DISTRIBUTE OR COPY THIS BY E-MAIL OR OTHERWISE



(509) 884-6644 Phone (509) 884-4567 Fax

SALESMAN	NAME	DRAWN BY	DATE	DRAWING SCALE
		PPS	06/21/19	AS SHOWN

PROJECT
WSDOT

TYPE 6 J-BOX

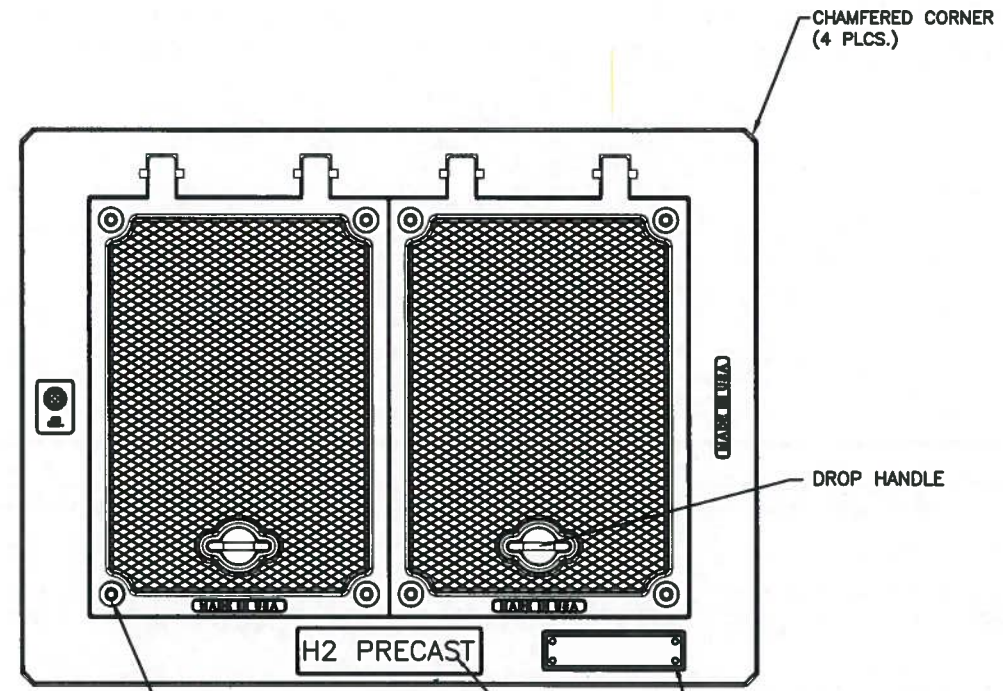
REV. NO.	DISCUSSION	DATE	TITAN #	TITAN #	SHEET 1 OF 1

8268ZPT 8268APT Assembly

APPROVED

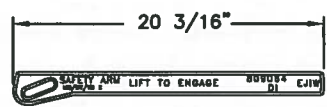
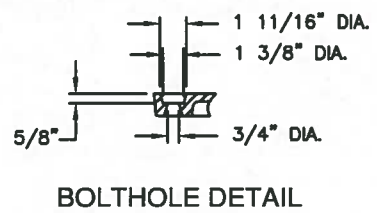
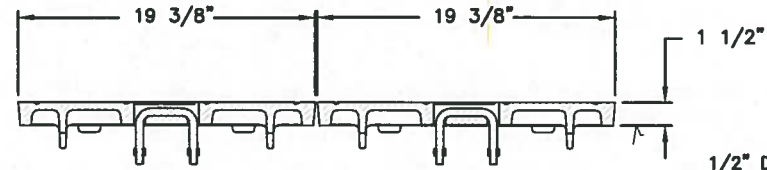
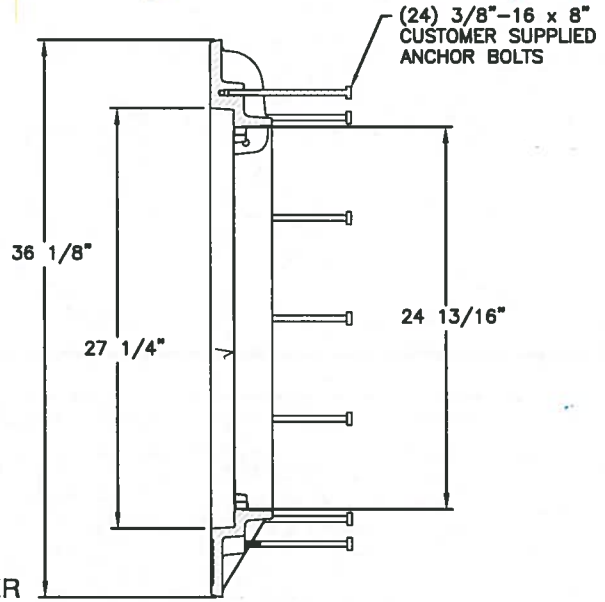
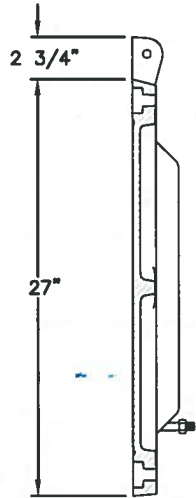
Washington State Department of Transportation
HQ Traffic Operations Office

BY: [Signature] DATE: 8/16/2019

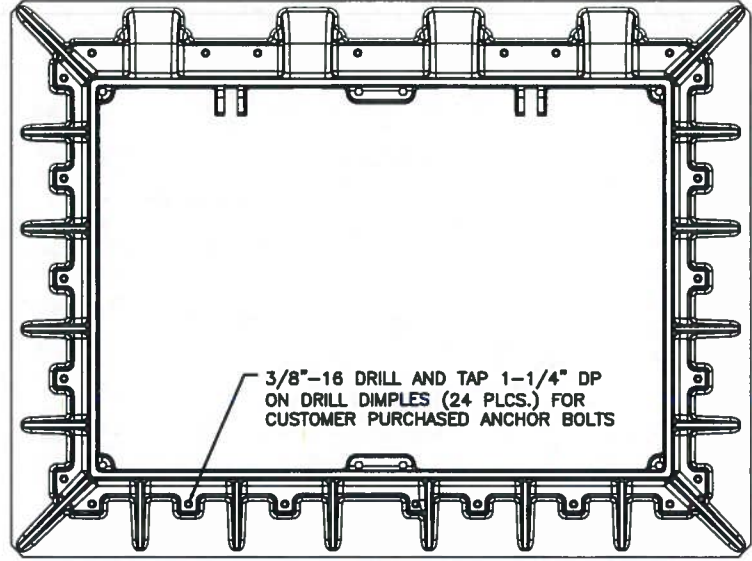
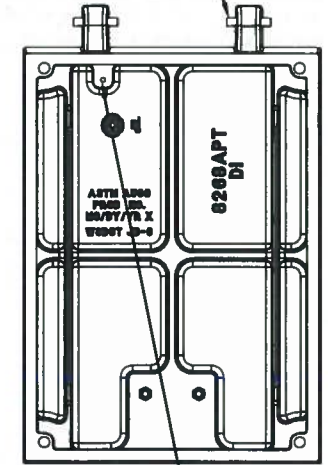
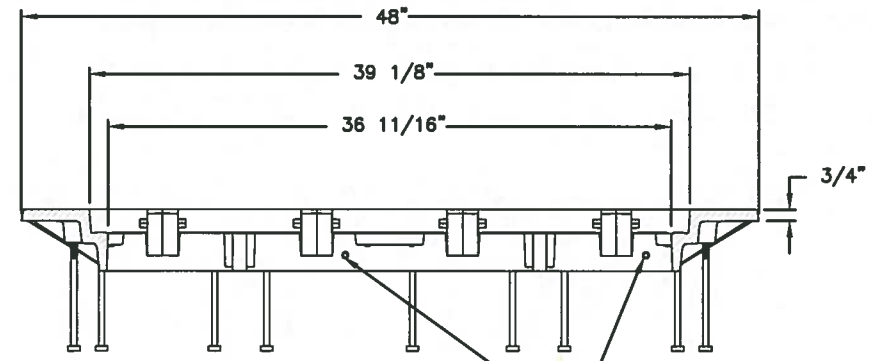


(8) 1/2"-13 X 1 3/4" PENT
HD. S.S. BOLTS WITH
(8) 1/2" ID 1 1/4" OD
STAINLESS STEEL WASHERS

1" SHARP FACE
GOTHIC



1/2" DIA. x 2-7/8" SS HINGE
PIN (2 PLCS.) (CAST IN PLACE)



5/16"-18 DRILL AND TAP THRU
FOR CUSTOMER SUPPLIED BOLT

5/16"-18 DRILL AND TAP 1" DP
FOR CUSTOMER SUPPLIED BOLT

Product Number
00826821B02

Design Features
-Materials
Frame
Gray Iron (CL35B)
Cover
Ductile Iron (80-55-06)

-Design Load
Heavy Duty
-Open Area
n/a
-Coating
Undipped
- Designates Machined Surface

Certification
- ASTM A48
- ASTM A536
- Country of Origin: USA

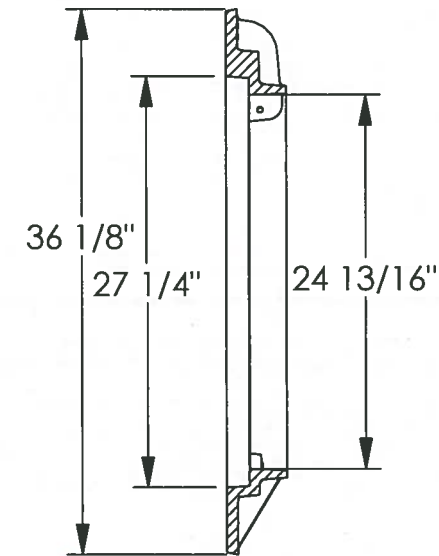
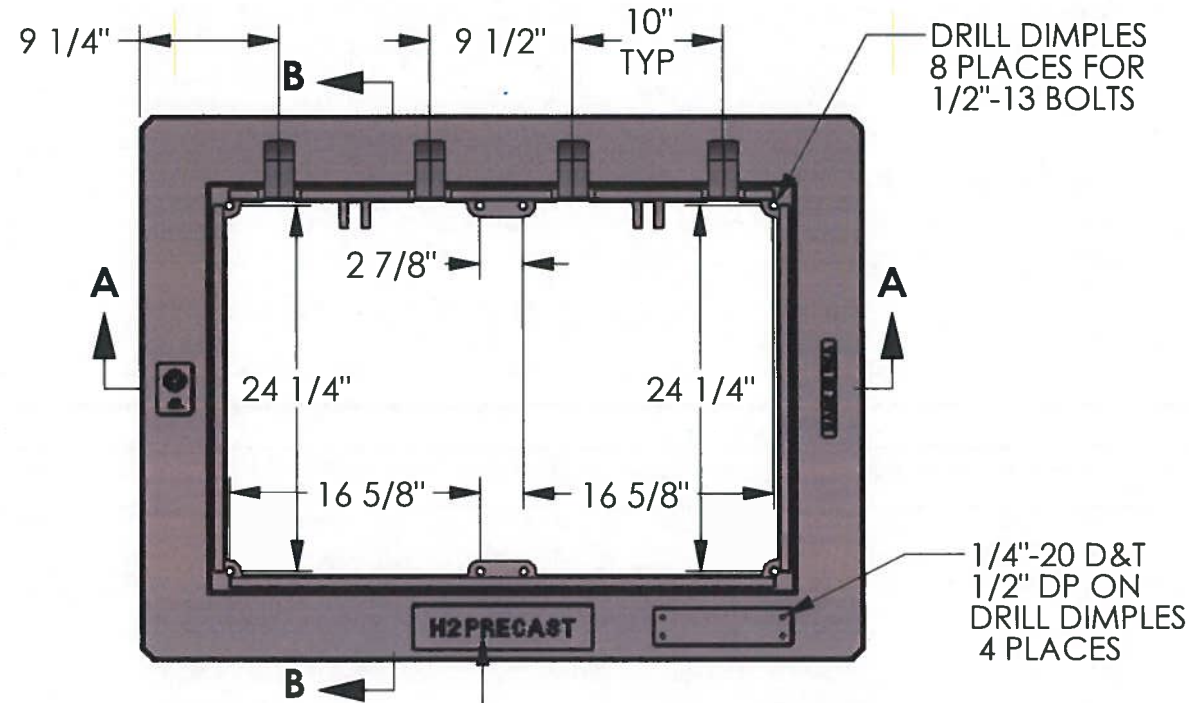
Major Components
00826813
(2) 00826821

Drawing Revision
8/30/2016 Designer: MAH
Revised By:

Disclaimer
Weights (lbs./kg) dimensions (inches/mm)
and drawings provided for your guidance. We
reserve the right to modify specifications without
prior notice.
CONFIDENTIAL: This drawing is the property
of EJ GROUP, Inc., and embodies confidential information,
registered marks, patents, trade secret information,
and/or know how that is the property of EJ GROUP, Inc.
Copyright © 2012 EJ GROUP, Inc.
All rights reserved.

Contact
800 626 4653
ejco.com

8268ZPT Hatch Frame



SECTION B-B

Product Number

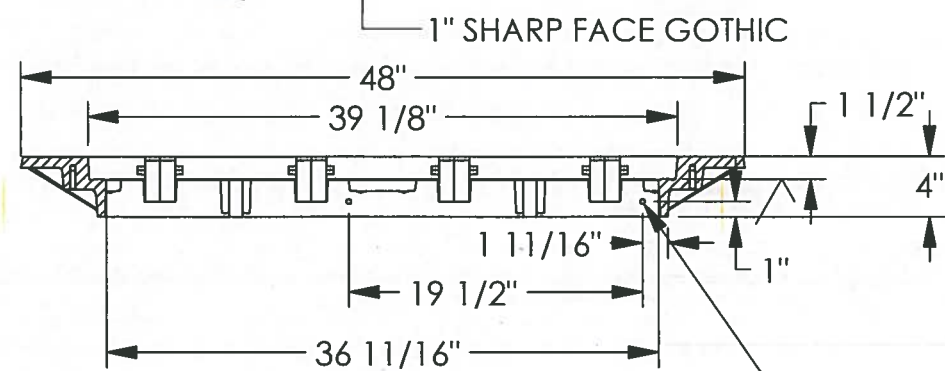
00826813

Design Features

- Materials
Gray Iron (CL35B)
- Design Load
Heavy Duty
- Open Area
n/a
- Coating
Undipped
- √ Designates Machined Surface

Certification

- ASTM A48
-
- Country of Origin: USA



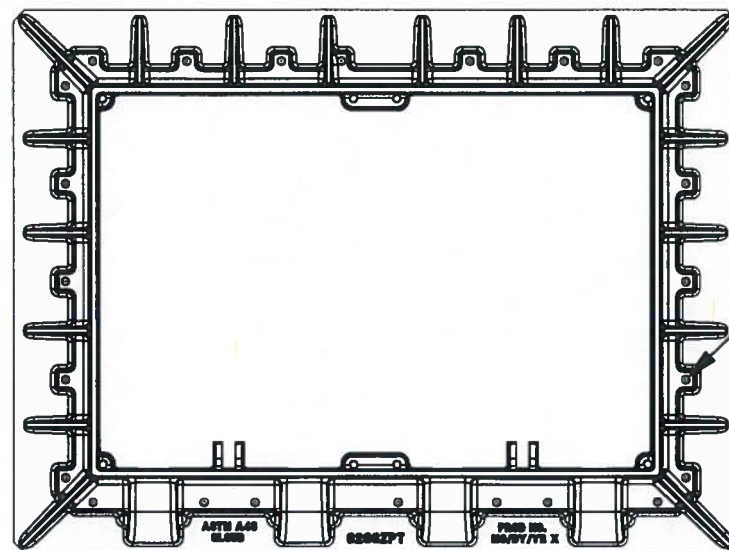
SECTION A-A

5/16"-18 D&T THRU (2) PLACES FOR CUSTOMER SUPPLIED BOLT

APPROVED

Washington State Department of Transportation
HQ Traffic Operations Office

BY: *MAH* DATE: 8/10/2019



BOTTOM VIEW

NOTE: ALL MACHINING WILL BE OUTSOURCED

Drawing Revision

8/30/2016 Designer: MAH
8/31/2016 Revised By: MAH

Disclaimer

Weights (lbs/kg), dimensions (inches/mm) and drawings provided for your guidance. We reserve the right to modify specifications without prior notice.

CONFIDENTIAL: This drawing is the property of EJ Group, Inc. and embodies confidential information, registered marks, patents, trade secret information, and/or know how that is the property of EJ Group, Inc. Copyright © 2013 EJ Group, Inc. All rights reserved.

Contact

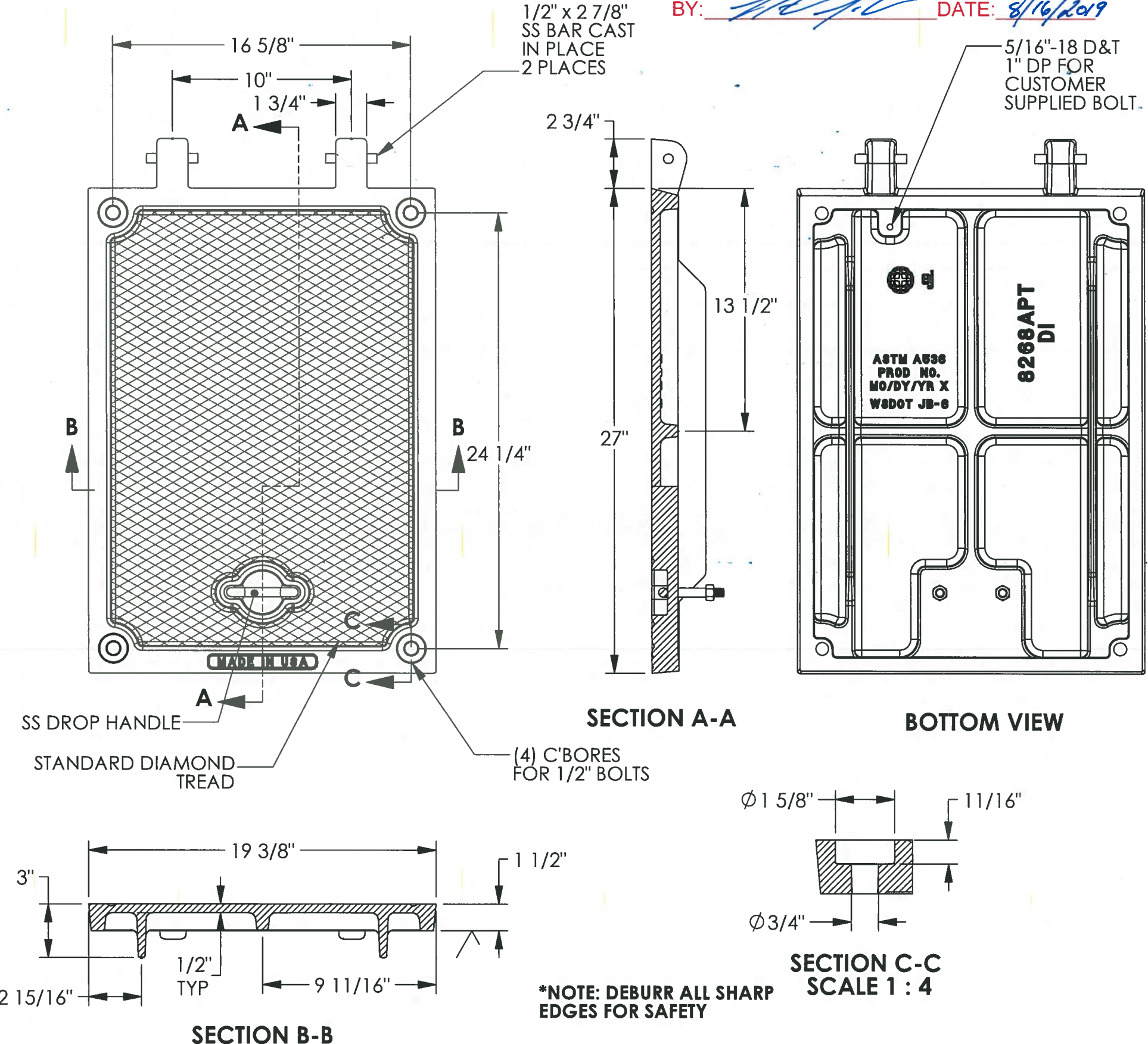
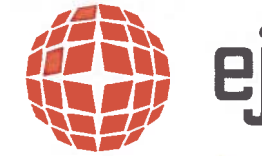
800 626 4653
ejco.com

8268APT Hatch Cover

APPROVED

Washington State Department of Transportation
 HQ Traffic Operations Office

BY: [Signature] DATE: 8/16/2019



- Product Number**
 00826821
- Design Features**
- Materials
 Ductile Iron (80-55-06)
 - Design Load
 Heavy Duty
 - Open Area
 n/a
 - Coating
 Undipped
 - √ Designates Machined Surface

- Certification**
- ASTM A536
 -
 - Country of Origin: USA

- Drawing Revision**
- 11/18/2013 Designer: DEF
 - 08/10/2016 Revised By: DEF

Disclaimer
 Weights (lbs/kg), dimensions (inches/mm) and drawings provided for your guidance. We reserve the right to modify specifications without prior notice.

CONFIDENTIAL: This drawing is the property of EJ Group, Inc. and embodies confidential information, registered marks, patents, trade secret information, and/or know how that is the property of EJ Group, Inc. Copyright © 2013 EJ Group, Inc. All rights reserved.

Contact
 800 626 4653
 ejco.com