

POLE DATA - PED POLE - FIXED BASE														
MMC #	QTY	POLE TYPE	POLE TUBE				BASE DETAIL					ANCHOR BOLT		
			THICK (IN) "A"	BASE DIA (IN) "B"	TOP DIA (IN) "C"	LENGTH (FT) "D"	SQUARE "S" (IN)	BOLT CIRCLE "F" (IN)	BOLT CENTERS "M" (IN)	THICKNESS "G" (IN)	HOLE/SLOT "H" (IN)	DIA "J" (IN) (FULLY THREADED)	LENGTH "K" (IN)	ANCHOR PLATE O.D. "L" (IN)
WA-PED-FB-PS-78		PS	11 GA	6.5	5.43	7'-8"	9"	9"	6 3/8"	3/4	1	3/4	30	12"
WA-PED-FB-I-98		I			5.15	9'-8"								
WA-PED-FB-RM-98		RAMP METER			5.15	9'-8"								
WA-PED-FB-FB-138		FLASHING BEACON			4.59	13'-8"								

POLE DATA - PED POLE - CURB BASE														
MMC #	QTY	POLE TYPE	POLE TUBE				BASE DETAIL					ANCHOR BOLT		
			THICK (IN) "A"	BASE DIA (IN) "B"	TOP DIA (IN) "C"	LENGTH (FT) "D"	SQUARE "S" (IN)	BOLT CIRCLE "F" (IN)	BOLT CENTERS "M" (IN)	THICKNESS "G" (IN)	HOLE/SLOT "H" (IN)	DIA "J" (IN) (FULLY THREADED)	LENGTH "K" (IN)	ANCHOR PLATE O.D. "L" (IN)
WA-PED-FB-PS-78-C		PS	11 GA	6.5	5.43	7'-8"	9"	9"	6 3/8"	3/4	1	3/4	36	12"
WA-PED-FB-I-98-C		I			5.15	9'-8"								
WA-PED-FB-RM-98-C		RAMP METER			5.15	9'-8"								
WA-PED-FB-FB-138-C		FLASHING BEACON			4.59	13'-8"								

MATERIAL SPECIFICATIONS

POST: ASTM A572 GR55
 BASE PLATE: ASTM A709 GR 50
 MAST ARM: N/A
 MOUNTING PLATE: N/A
 HARDWARE FINISH: ASTM F2329
 CONNECTION BOLTS: ASTM F1554 GR55
 CONNECTION NUTS:
 CONNECTION WASHERS:
 ANCHOR BOLTS:
 ANCHOR BOLT NUTS: ASTM A563 GR DH
 ANCHOR BOLT WASHER: ASTM F436
 WELDING ELBOW:
 PIPE: ASTM A53 GR B OR ASTM A500 GR B

DESIGN CRITERIA

2015 AASHTO STANDARD SPECIFICATIONS FOR STRUCTURAL SUPPORTS ON HIGHWAY SIGNS, LUMINAIRES & TRAFFIC SIGNALS INCLUDING LATEST INTERIMS.

WINDS: 115 MPH WITH A MEAN RECURRENCE INTERVAL OF 1700 YEARS
 VORTEX SHED: N/A
 FATIGUE CAT: N/A
 NATURAL WIND GUST: N/A
 LUMINAIRE: N/A
 LUMINAIRE WEIGHT: N/A
 SIGN: N/A
 SIGN WEIGHT: N/A

WELD SPECIFICATION

THE POST AND MAST ARM TO BE ROUND TAPERED TUBE FABRICATION WITH ONE SUBMERGED ARC LONGITUDINAL SEAM WELD WITH 100% PENETRATION 6" FROM BASE PLATE. FLANGE AND BUTT WELDED SHAFTS. EXCEPT FOR TUBES LESS THAN 5 IN DIAMETERS. FOR FEMALE SECTION OF SLIP JOINTED TUBES 10" AND GREATER: 1.5 X FEMALE SECTION INSIDE DIAMETER + 6 INCHES. FOR FEMALE SECTION OF SLIP JOINTED TUBES LESS THAN 10" FEMALE SECTION NOMINAL DIAMETER AND 60% FOR REMAINDER. GAS METAL ARC WELDING PROCESS WITH 60% PENETRATION MAY BE USED FOR REMAINDER OF WELDED FABRICATION.

WELD TESTING: 100% OF ALL WELDS VISUAL TESTED (VT)(MT), 100% OF ALL COMPLETE JOINT PENETRATION (CJP) WELDS ULTRASONIC TESTED (UT) BASED ON THE THINNEST MATING MATERIAL. (PER AASHTO 2013 5.15 5-WELD INSP) THICKNESS. < 6MM (0.25 IN) MT >= 6MM (0.25 IN) UT

WELDING INSPECTION OF STRUCTURE SHALL BE IN ACCORDANCE WITH THE REQUIREMENTS OF WASHINGTON STATE DEPARTMENT OF TRANSPORTATIONS STANDARD SPECIFICATION SECTION 6-03 3(25) AND 2015 ASSHTO WELD INSPECTION SECTION 14.4.4.8

STRUCTURE FINISH SPECIFICATION

GALV. OR PRIME COAT: HOT DIPPED GALV. PER ASTM A123
 FINISH COAT:
 COLOR:
 FEDERAL OR RAL SPEC.:
 WEIGHT W/GALV.:
 WEIGHT W/GALV.&PAINT:
 SURFACE AREA:
 GAL. OF PAINT:

MILLERBERND 622 6TH ST. SO. WINSTED, MN 55395

THIS DOCUMENT CONTAINS CONFIDENTIAL INFORMATION AND IS THE PROPERTY OF MILLERBERND MFG AND MAY NOT BE COPIED, REPRODUCED OR DISCLOSED IN ANY MANNER WITHOUT THE EXPRESS WRITTEN CONSENT FROM MILLERBERND MFG

SALES ORDER NO.: 74514 QTY: - STATE: WA SHEET 1 OF 2

DESCRIPTION: SUB POLE PED RD - FIXED BASE

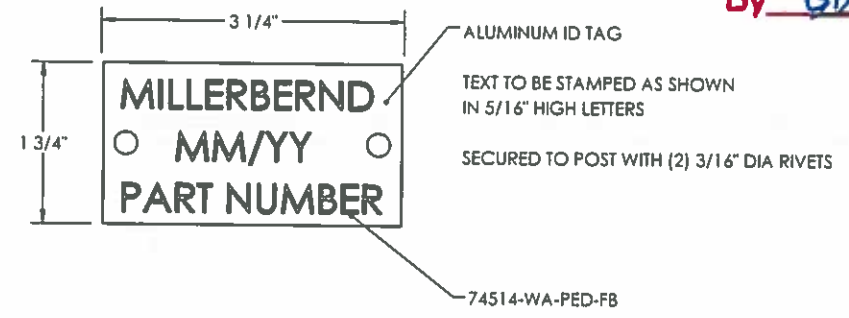
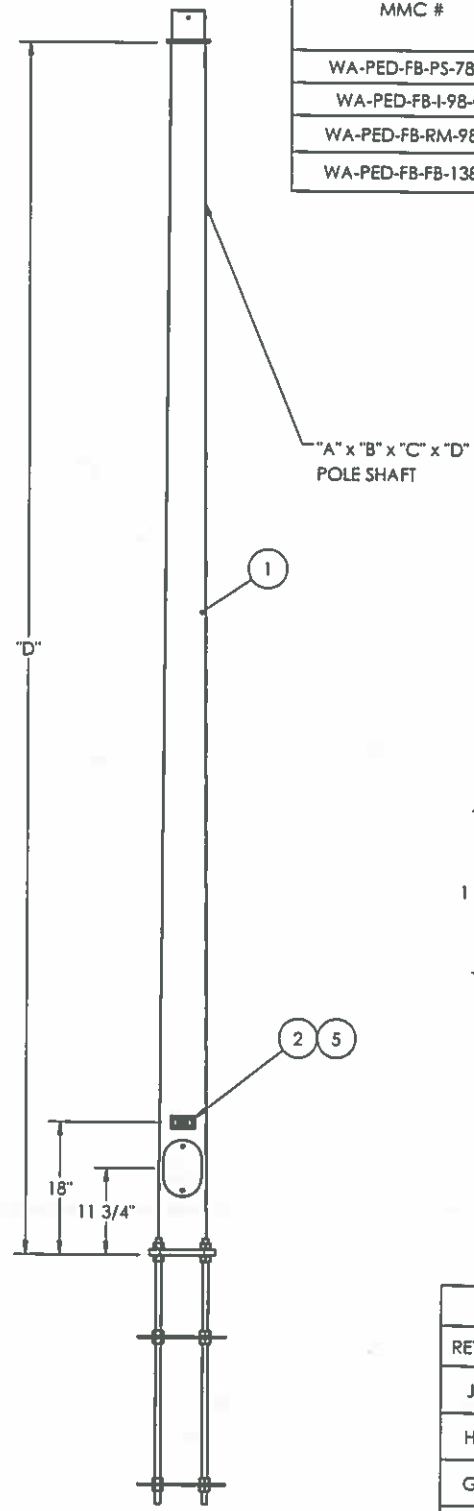
EST. WEIGHT: DRAWING NO: 74514-WA-PED-FB

PROJECT NAME: STATE OF WASHINGTON PED POLES

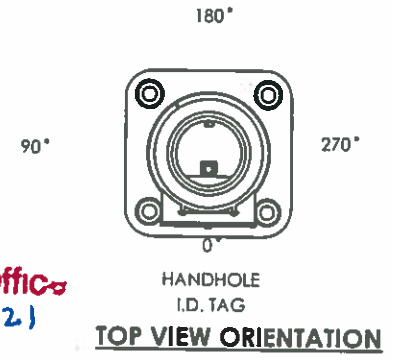
PROJECT LOCATION: WA

DWN BY: REBEKAH DATE: 02-16-2017

CHK BY: DATE:



APPROVED
 Manufacturer's Pole Plan
 Approved For Listing As A
 Pre-Approved Drawing
 WSDOT Bridge & Structures Office
 By GB Date 3-30-2021



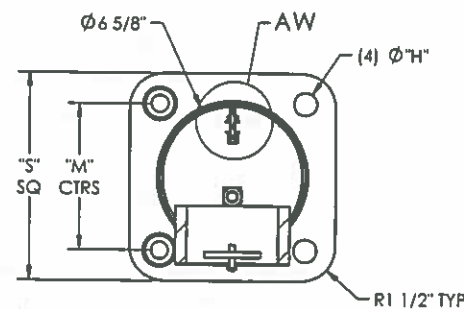
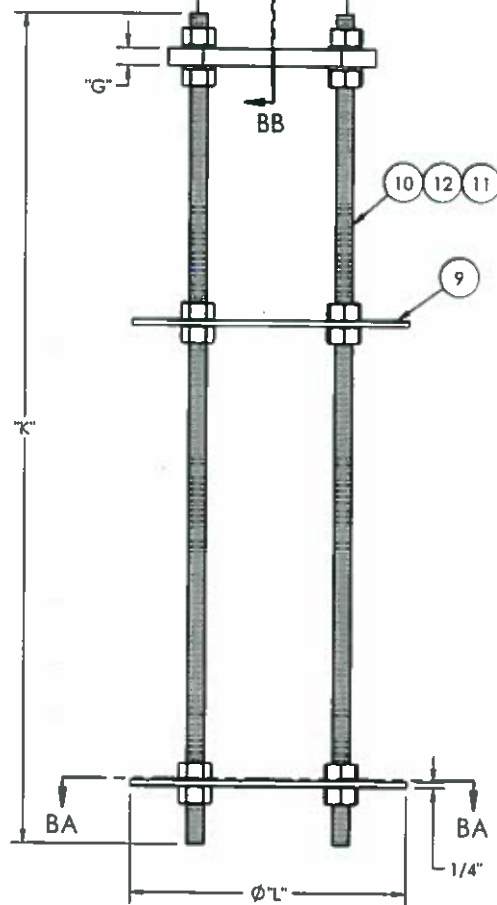
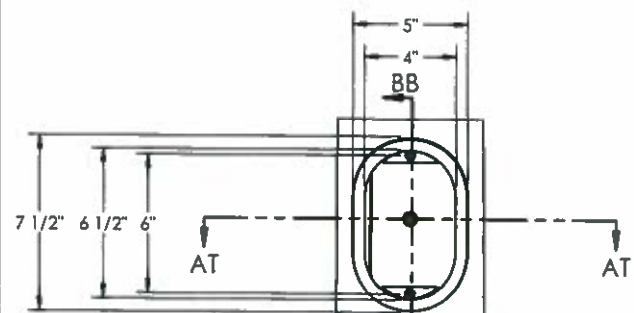
NOTE: FOR NOTE AT WELD SYMBOL TAIL SEE WELDING PROCEDURE SPECIFICATION

REVISIONS			
REV.	DESCRIPTION	DATE	DRFT
J	ADDED THE CURB OPTION	3/22/21	TK
H	UPDATED WELD NOTE UPDATED PER COMMENTS	6/12/2020	RK
G	UPDATED NOTES PER COMMENTS. UPDATED WPS TO MMC STANDARDS	5/12/2020	RK
F	ADDED 3/8" DIA GALV HANG HOLE IN TENON	1/22/2020	RK

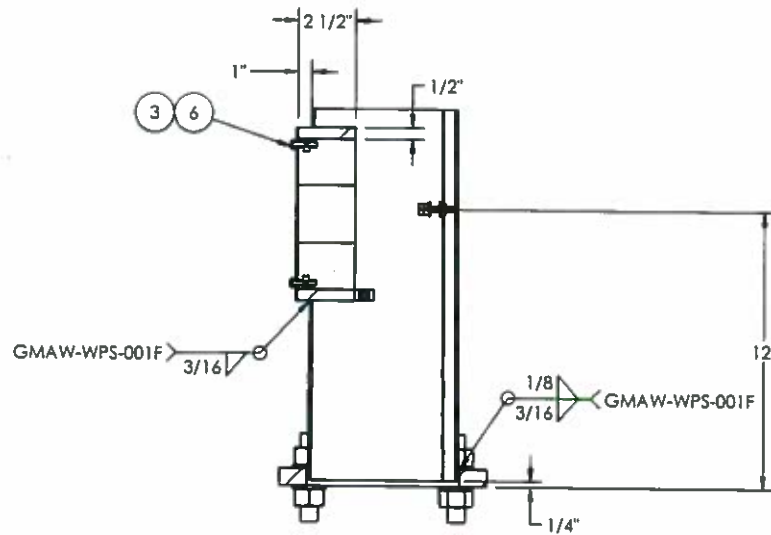


3-30-21 (EXPIRES 12-18-21)

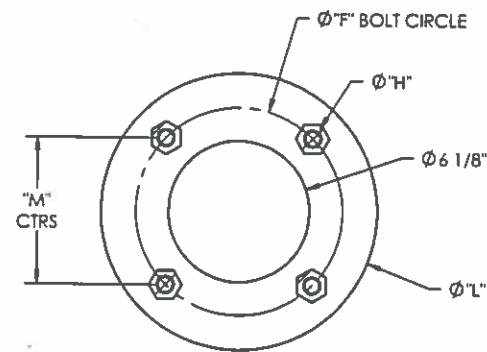
ITEM NO.	DESCRIPTION	QTY PER	ASSY	FINISH
1	WLDMT POLE PED "A"x"B"x"C"x"D"	1		X
2	I.D. TAG - WA	1	X	
3	COVER HH M16C 4 1/4X6 3/4 2 BOLT	1		X
4	NUTHX1-4-20SS	3	X	
5	RIVET POP 3/16X1/2X3/8 HD SS	2		
6	SCRW HX SK BT HD 1-4-20NC X 1 SS	2		
7	WASHER FLAT 1/4 SS 5/8 OD ASME B18.22.1 SS	2	X	
8	GASKET HH M16	1		
9	BASE RD 0.5 x 12"	2	X	
10	ANCHOR BOLT 3/4X36 LG (FULLY THREADED)	4		
11	WASHER FLAT 3/4 ASTM F436 GV	8		
12	NUT HVY HX 3-4-10NC G5 GV	24		



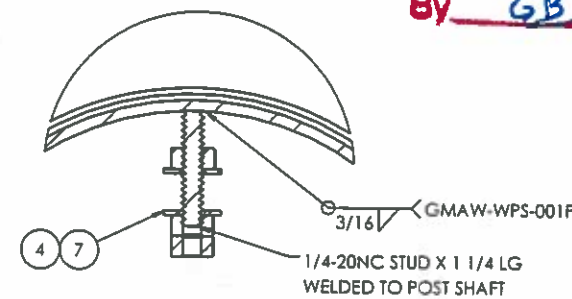
SECTION AT-AT
SCALE 1 : 8



SECTION BB-BB
SCALE 1 : 8



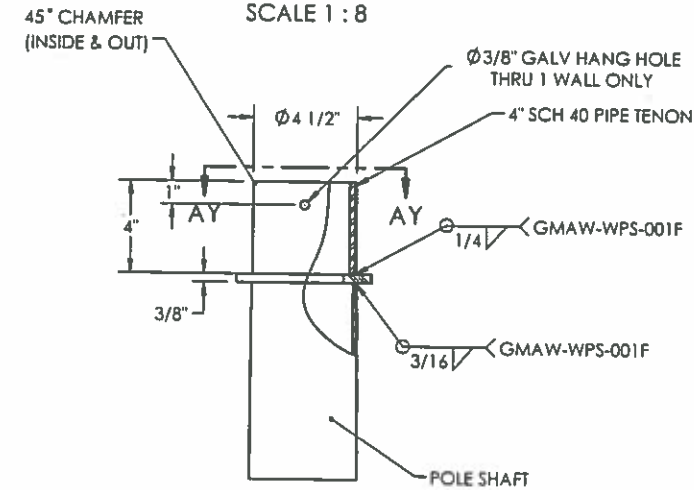
SECTION BA-BA
SCALE 1 : 8



DETAIL AW
SCALE 1 : 2



SECTION AY-AY
SCALE 1 : 8



POLE TOP TENON DETAIL

APPROVED
 Manufacturer's Pole Plan
 Approved For Listing As A
 Pre-Approved Drawing
 WSDOT Bridge & Structures Office
 By GB Date 3-30-2021



3-30-21 (EXPIRES 12-18-21)

MILLERBERND		622 6TH ST. SO. WINSTED, MN 55395	
THIS DOCUMENT CONTAINS CONFIDENTIAL INFORMATION AND IS THE PROPERTY OF MILLERBERND MFG AND MAY NOT BE COPIED, REPRODUCED OR DISCLOSED IN ANY MANNER WITHOUT THE EXPRESS WRITTEN CONSENT FROM MILLERBERND MFG			
SALES ORDER NO.:	QTY:	STATE:	SHEET
74514	-	WA	2 OF 2
DESCRIPTION: SUB POLE PED RD - FIXED BASE			
EST. WEIGHT:		DRAWING NO: 74514-WA-PED-FB	
PROJECT NAME: STATE OF WASHINGTON PED POLES			
PROJECT LOCATION: WA			
DWN BY: REBEKAH		DATE: 02-16-2017	
CHK BY:		DATE:	