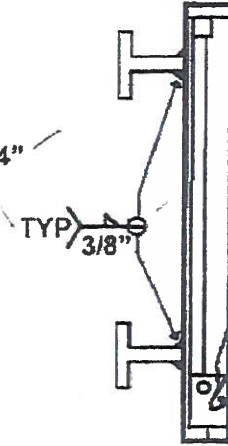
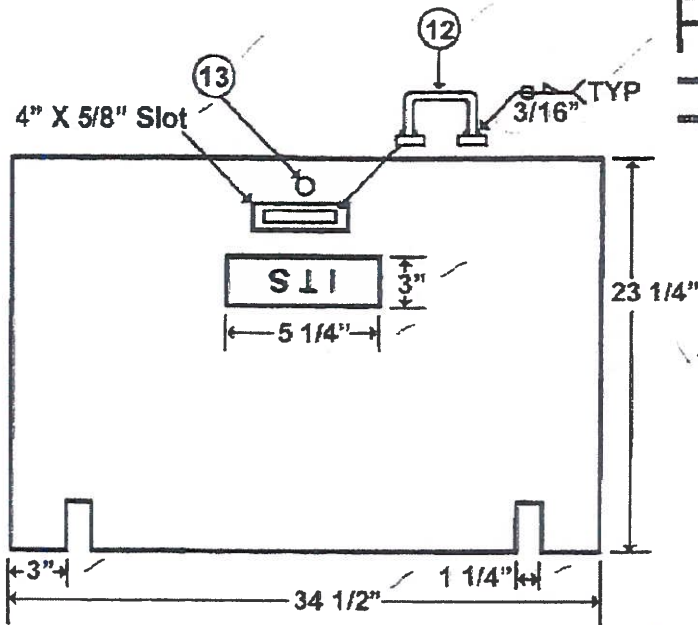
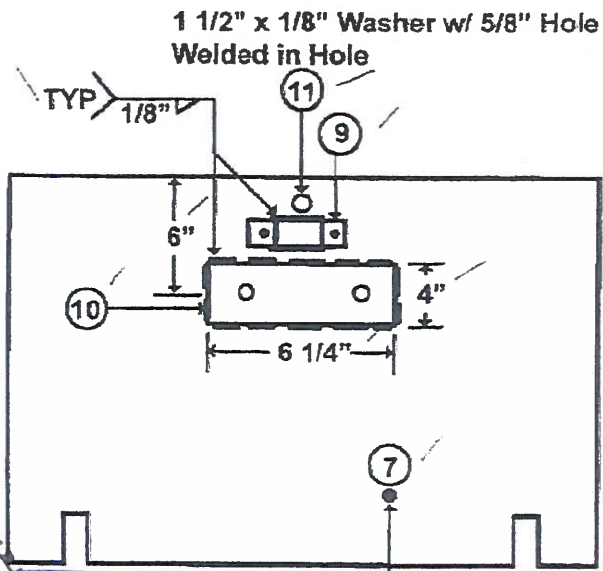


FOG TITE INCORPORATED

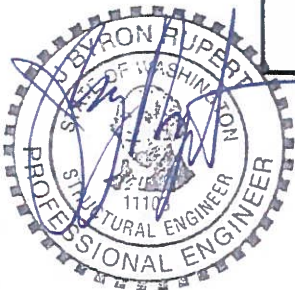
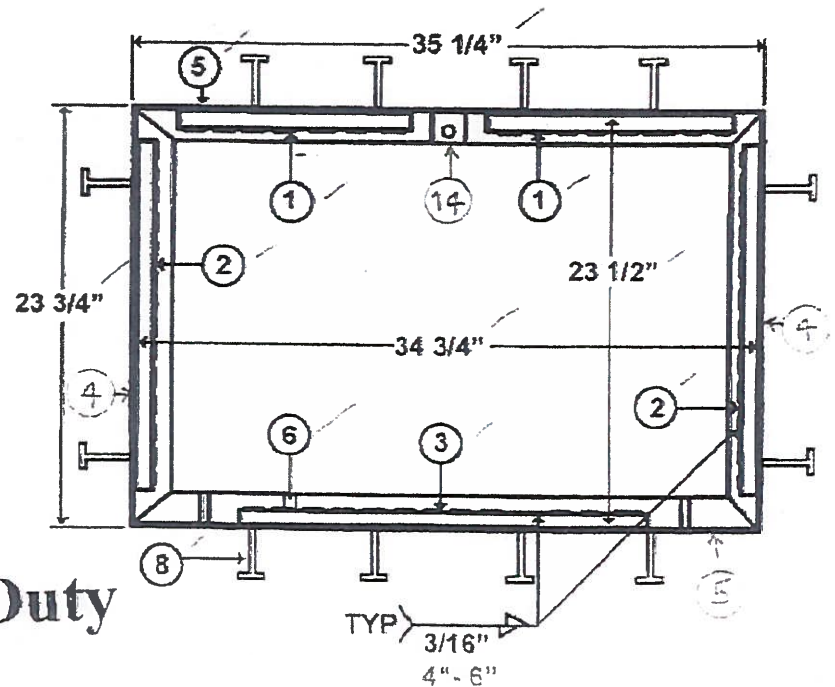


#	QTY	NAME
1	2	3/4" x 3/4" x 14" Bar
2	2	3/4" x 3/4" x 21" Bar
3	1	3/4" x 3/4" x 22 3/8" Bar
4	1	1 1/2" x 1 1/2" x 1/4" Angle
5	2	1 1/2" x 1 1/2" x 1/4" Angle
6	2	5/16" SS Coupling Nut
7	1	1/4" x 3/4" SS Ground Stud
8	12	3/8" x 3" Studs
9	1	1" x 3 x 1/8" Plate
10	1	4" x 6" x 1/8" Plate
11	1	1 1/2" x 1/8" Washer
12	1	1/2" Lift Handle
13	1	1 1/2" x 1/2" SS Penta Head Bolt
14	1	1 5/8" x 3/2" SS Channel w/ 1/2" SS nut



Ground Stud w/ Nut and 2 washers - S.S.
1/8"

APPROVED AS NOTED
 SUPERSEDED
 Washington State Department of Transportation
 HQ Traffic Operations Office
 DATE: December 1, 2009 TAT



210-17

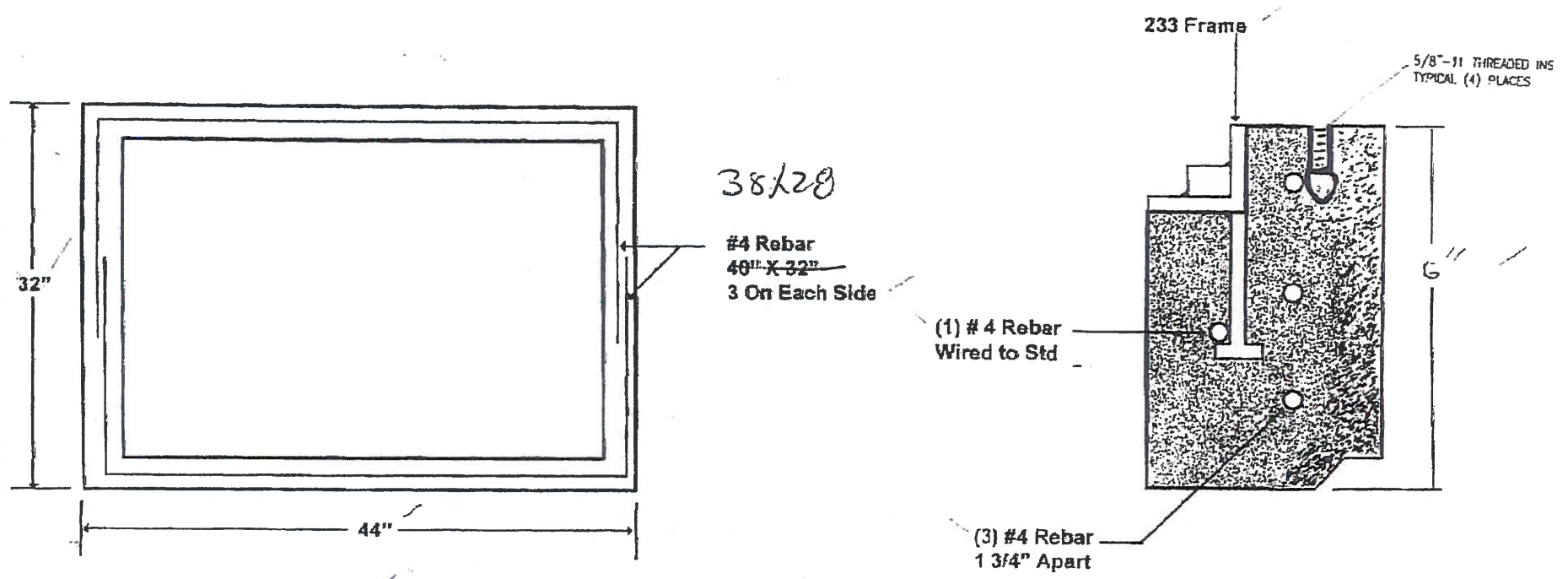
APPROVED

233 Standard Duty

Washington State Department of Transportation
 HQ Traffic Operations Office

BY: *[Signature]* DATE: 2/16/2017

FOG TITE
INCORPORATED



2-10-17

JEFFREY R. RUPERT
STATE OF WASHINGTON
PROFESSIONAL ENGINEER
11103

APPROVED
Washington State Department of Transportation
HQ Traffic Operations Office
BY: [Signature] DATE: 2/16/2017

233 Standard Duty

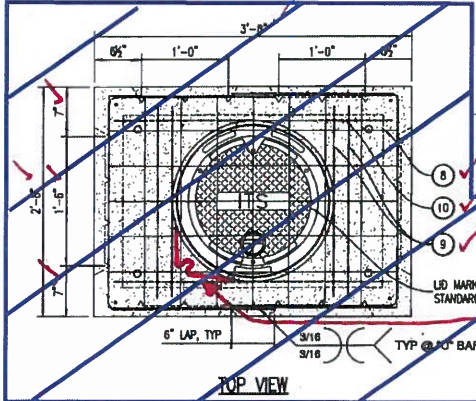
~~APPROVED~~
~~Washington State Department of Transportation~~
~~HQ Traffic Operations Office~~
~~DATE December 1, 2008~~

see WSDOT Amendment to Standard Specifications, Dec. 4, 2006 For design requirements & test procedures. Acceptance of this pull box is based on materials requirements & receipt of independent testing lab results stating pull box meets or exceeds testing criteria.

*4 through cored hole in frame 3711ZPT. 12 inch lap & wire tie to #3 bar. Typical 4 places.

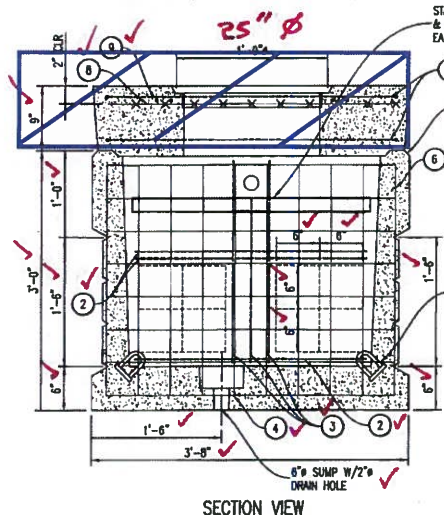
bond lid to frame w/ #8 AWS #2 FR. trimmed, braided copper.

ESIW 3711CPT-01 Cover-stamped ITS
ESIW 3711ZPT-SLO Frame-heavy duty

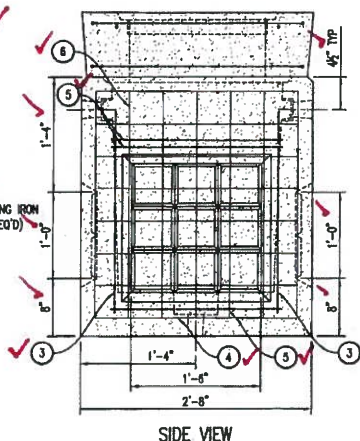


LID MARKING SEE STANDARD PLAN J-11a

TYP. GRD. BAR (1)



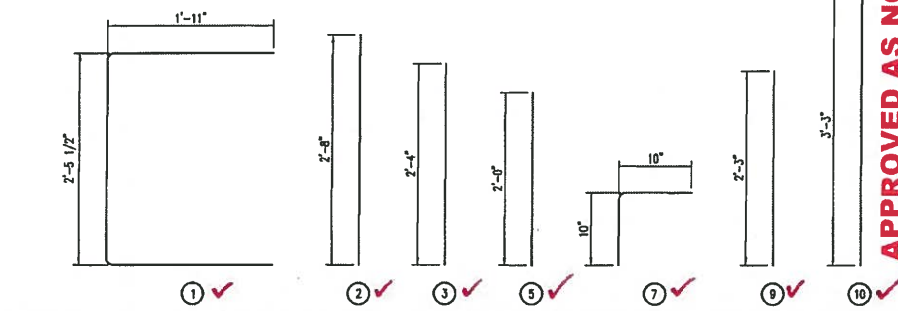
SECTION VIEW



SIDE VIEW

Not applicable for Standard Duty Pull Box

PULL BOX DETAIL
1 S1 1' = 1'-0"



APPROVED AS NOTED

Washington State Department of Transportation
HQ Traffic Operations Office

BY: [Signature] DATE: 3/16/2017

NOTES:
1. SHOP CUT WELDED WIRE MESH FOR BLOCKOUTS. PROVIDE #3 TRIMMING BARS (1) & (10) AROUND BLOCKOUTS AS SHOWN.

2 STEEL MESH ISOMETRIC
S1 3/4" = 1'-0"

3 ISOMETRIC ASSEMBLY
S1 1' = 1'-0"

DESIGN PARAMETERS:

- ASHTO STANDARD SPECIFICATIONS FOR HIGHWAY BRIDGES
- ACI-318-02 BUILDING CODE
- ASTM C857 MINIMUM STRUCTURAL DESIGN LOADING FOR UNDERGROUND PRECAST CONCRETE UTILITY STRUCTURES

LOADS:

- 150 pcf CONCRETE DENSITY
- 120 pcf SOIL DENSITY
- ASHTO H-35-S28 WHEEL LOAD W/30% IMPACT
- ASHTO LIVE LOAD SURCHARGE (2' SOIL)
- EFFECTIVE SOIL PRESSURE = 45 pcf
- NO WATERTABLE

MATERIALS:

- CONCRETE - 28 DAY COMPRESSION STRENGTH (f'c) = 6000 psi
- REBAR - ASTM A706 GRADE 60 fy = 60 ksi (WELDABLE)
- ASTM A82/A185 fy = 65 ksi (WELDED WIRE MESH)
- THE ROLLS OF WELDED WIRE MESH SHALL BE STRAIGHTENED & CUT TO SIZE BEFORE PLACEMENT.
- 3/8" DIAMOND PLATE COVER - ASTM A36 Fy = 36 ksi

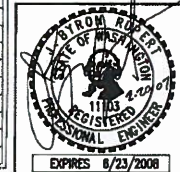
SOIL COVER:

NO SOIL COVER - TOP OF COVER @ GRADE

APPROVED AS NOTED
SUPERSEDED
Washington State Department of Transportation
HQ Traffic Operations Office
DATE: TAT August 7, 2007

BILL OF MATERIALS (STEEL RE-BAR & WELDED WIRE MESH)				
PART	DESCRIPTION	QTY	SIZE	WT. LBS
(1)	3 ASTM A706 GRADE 60	4	SEE DRAWING	--
(2)	3 ASTM A706 GRADE 60	6	STRAIGHT 2'-8"	--
(3)	3 ASTM A706 GRADE 60	10	STRAIGHT 2'-4"	--
(4)	4x4 - W4.DxW4.0	1	SEE DETAIL 2/S1.0	--
(5)	3 ASTM A706 GRADE 60	6	STRAIGHT 2'-0"	--
(6)	4x4 - W4.DxW4.0	1	SEE DETAIL 2/S1.0	--
(7)	3 ASTM A706 GRADE 60	5	SEE DRAWING	--
(8)	4x4 - W4.DxW4.0	1	SEE DETAIL 2/S1.0	--
(9)	3 ASTM A706 GRADE 60	4	STRAIGHT 2'-3"	--
(10)	3 ASTM A706 GRADE 60	2	STRAIGHT 3'-3"	--

* 1'-0" OVERLAP FOR PART (4)



TYPE 233 PULL BOX (H35)

SCALE: SEE DETAILS
SHEET: S1.0
JOB NO: 06106

DATE: 05.15.07

FOGTITE
INCORPORATED